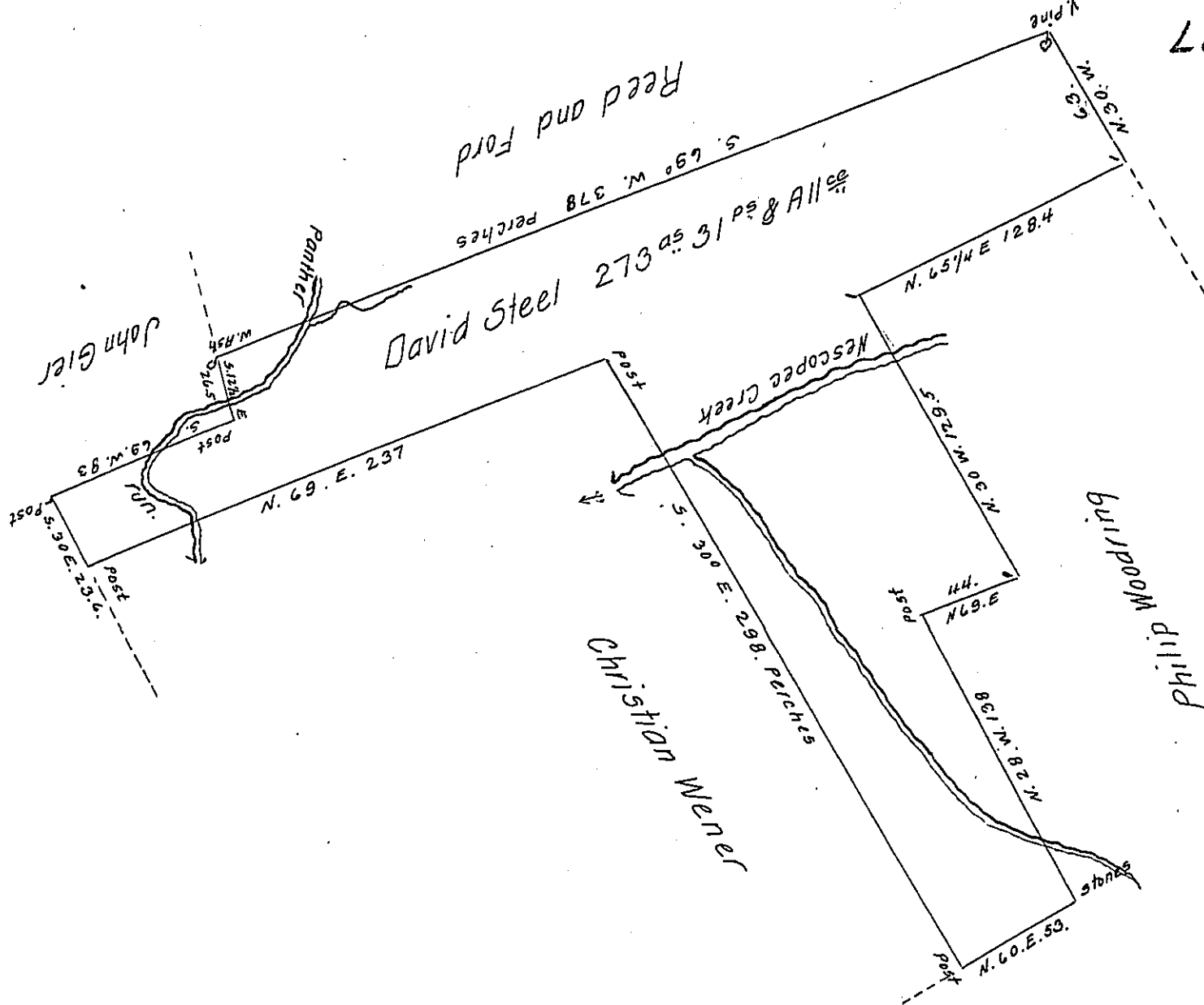


Sug-Loaf
& Butler - 74
Luzerne,



A draught of a tract of land on which a family actually resides Situate in Sugar loaf Township in the County of Luzerne adjoining lands of John Gier, Christian Wener and others. Surveyed the 12th day of May 1815. unto David Steel the above described tract of two hundred & Seventy three Acres and 31 perches of land With the allowance &c. In pursuance of a Warrant dated the 17th day of March A. D. 1815.

John Bennet D. S.

Rich^d T. Leech Esq^r }
Surv^r Gen^l of Penns^a }

IN TESTIMONY that the above is a copy of the original remaining on file in the Department of Internal Affairs of Pennsylvania, made conformably to an Act of Assembly approved the 16th day of February 1833, I have hereunto set my hand and caused the Seal of said Department to be affixed at Harrisburg, this twenty ninth day of December 1906.

Leach & Leech
Secretary of Internal Affairs.